

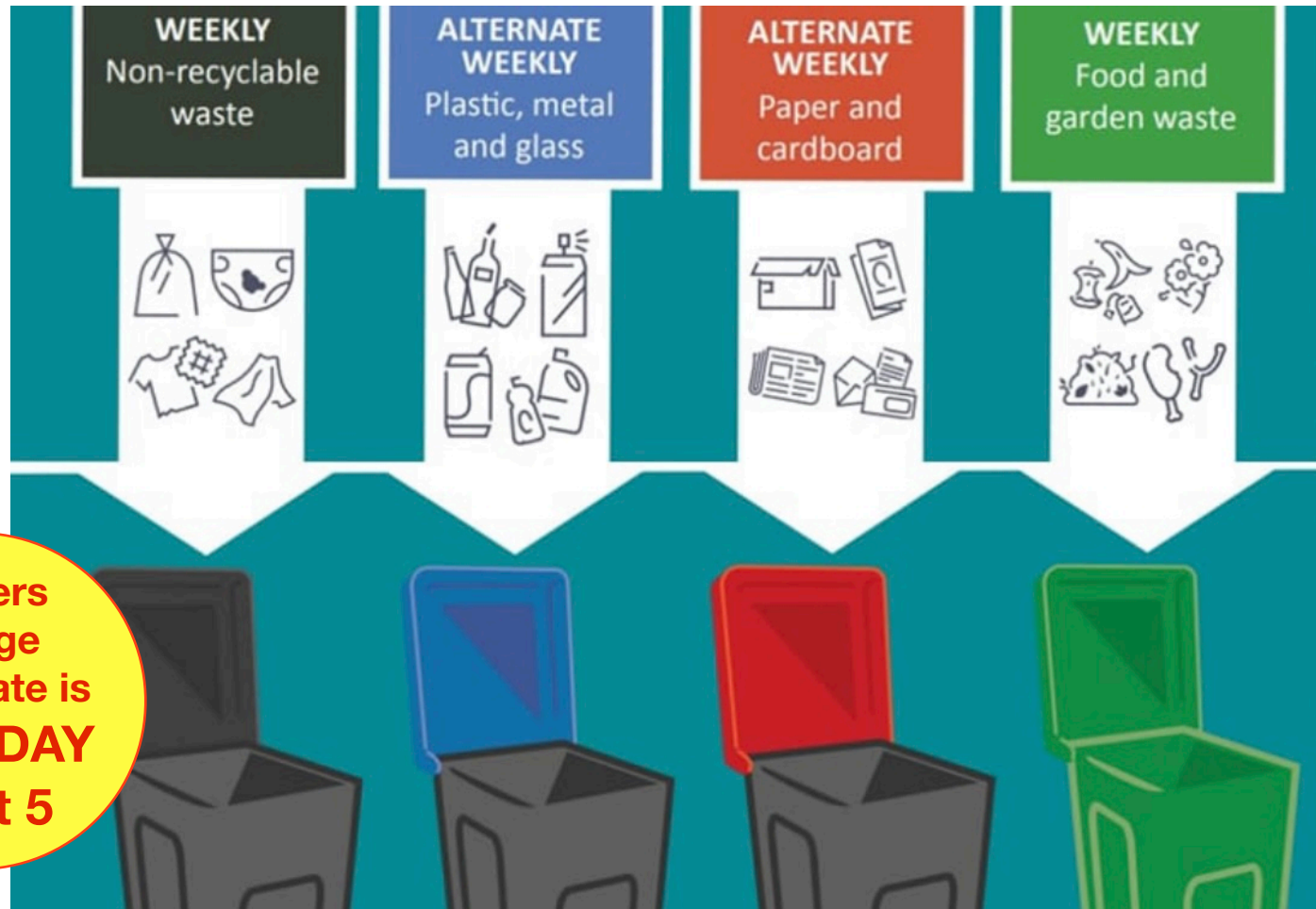
Email: [thebridge@tinkersbridge.org.uk](mailto:thebridge@tinkersbridge.org.uk)

## Collection Day will be Tuesday starting Sept 5th!

### On collection day, please

- DOUBLE bag dog waste and bag other dirty items before putting them in the black wheelie bin
- Put your bins out by 7am on Tuesday
- Ensure the bin lid is fully closed
- Don't let bins block the road or drives
- Return your bins to your property once empty
- Consider helping elderly or vulnerable neighbours with their bins

**Tinkers  
Bridge  
start date is  
TUESDAY  
Sept 5**



w/c 4 September			
w/c 11 September			
w/c 18 September			
w/c 25 September			

Cracking down on dumping waste

## Your waste, Your responsibility



Fly-tipping is the illegal dumping of waste. It is a crime and is a problem in this area. Money spent clearing this rubbish could be better spent in other ways to help local people.

Offenders can receive a Fixed Penalty Notice of up to £250 or prosecution.

Our enforcement officers will be out in this area soon. They may knock on your door to talk about fly-tipping and how you can help.

## Fly-tipping can mean....



## How to report fly-tipping

If you see a resident or a business illegally dumping waste, TIP US OFF in confidence at [milton-keynes.gov.uk/flytipping](http://milton-keynes.gov.uk/flytipping) or call us on **01908 253200**.

Let us know:

- What was dumped and where it happened
- Date and times
- Description of the fly-tippers
- Vehicle registration number
- If you can **safely** take photos or video of the rubbish or of the people involved, please do

## HIRE THE MEETING PLACE

Did you know you can hire the local meeting place? For enquiries contact WCC on 01908 395681 mention you are a resident and you may get a discount.

## QUIZ & SUPPER - A FUNDRAISER

We are holding a fundraiser for the **TB Community Fridge** on Saturday September 30th at 7pm at Simpson Village Hall. Tables of 8 maximum, £15 for supper (English Breakfast) & quiz, £7.50 for just the quiz

Raffle (prizes gratefully accepted), tea & cake by donation in the interval, bring your own drink. Tickets **MUST** be booked in advance (details to follow)

## Dates for your Diary

All events are at the Tinkers Bridge meeting place unless stated otherwise.

### START OF THE NEW BINS BEING USED

Tuesday September 5th, note Tuesday!

### COMMUNITY FRIDGE/LARDER

Every Saturday, 9am - 11am

### TB RESIDENTS' ASSOCIATION MEETING

Thursday Sept 28th 7.30pm, All welcome

### QUIZ & SUPPER

Saturday Sept 30th 7.00pm, Fund raiser for TB Fridge and Cafe, Simpson Village Hall

[www.tinkersbridge.org.uk](http://www.tinkersbridge.org.uk)

### TBRA CONTACTS

John Orr *Chair*

April Rennie *Vice Chair*

Deanna Norris *Secretary*

Kirsty Rennie *Treasurer*

TBRA Tinkers Bridge Official group

Tinkers Community Café and projects

Tinkers Bridge Larder

*Councillor* April Rennie

07506776232

[april.rennie@woughtoncommunitycouncil.gov.uk](mailto:april.rennie@woughtoncommunitycouncil.gov.uk)

Woughton Community Council

01908 395681

**CAN YOU  
HELP?**

Do you have a skill/ trade or can you offer help in any way to residents? We would like to make a list of willing people. At the moment we need a vulnerable person's

house painting, a garden cleared, tip runs.

There are always people asking for help. If you can spare the time to help other residents please contact Councillor April Rennie.